

Version 0.5
Sponsor Beta

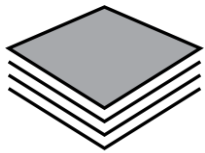
*Rémi Charton | Kofi Owusu
Jonathan Redfern
Carmen Luber*

| Objectives



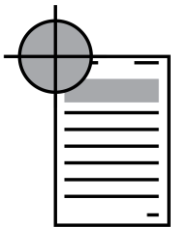
Accessible and secure platform

GIS database accessible online to all members of the NARG: sponsors, researchers and students



Abundant and reliable data

Store and access data collected by all NARG PhD students, as well as industry datasets and relevant literature



Efficient and relevant applications

Serve as a basis for current and future (i.e. *up-to-date*) research projects conducted within the NARG

| NARG Server & Website

■ NARG Website

- Protected by user/password
- Search tools
- Layers and full projects available

[Let's see...](#)

■ NARG server

- Located in this building
- Colossal amount of gigabits
- Protected by UoM network
- Accessible remotely
- Custom-designed website
- Automatic backups

<https://narg.seaes.Manchester.ac.uk/login1.php>



Accessible to '**NARG Account**' holders only

| Code for Sponsor Beta

NARG Database Registration

First Name

Surname

Username

Email

Password

Confirm password

Code

[Register](#)

Already a member? [Sign in](#)

NARGSPONSORS2019_XYZ3



| Multi-platform

■ ESRI

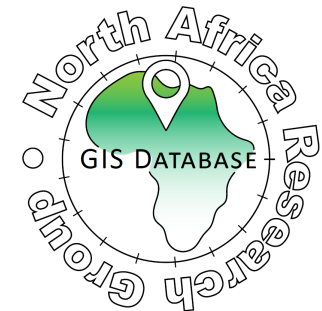
- ArcMap (10.2 to 10.7)
- ArcGIS Pro*

■ Common features

- Any data exportable for your projects
- Powerful applications
- Enhanced navigation with hyperlinks and thumbnails
- Easy editing
- Tailored manual
- Version log
- NARG GIS Database Stamp

■ Others

- QGIS*
- Google Earth*
- Virtual Reality Geological Studio*



Ultimately viewable on
virtually **any device**



| Featured data ...

■ Industry Layers

- Wells (%) *
- Well Location
- 2D Seismic
- 2D Seismic Location
- 3D Seismic
- HC exploration

✓ All elements populated with **metadata, figures, and/or hyperlink** to NARG data

■ Literature Layers (incl. NARG results)

- Outcrops
- Cross-sections
- Stratigraphy
- Low-temperature thermochronology
- Time-temperature modelling
- Geochronology
- Paleocurrents
- Provenance
- Palaeontology
- Subsidence
- Salt Tectonics
- Diagenesis
- Geochemistry *

| Featured data *continued*

■ NARG Layers

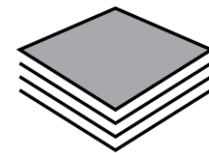
- Samples
- Pictures
- Thin Sections*
- Studies
- Reports
- Publications
- Modifications

■ Georeferenced maps

- Paleo-reconstruction
- Surface maps
- Isopach maps
- Results maps
(attribute, interpolation...)

■ Base Layers

- DEM
- Geography (areas, cities...)
- Borders
- Elevation contours
- Rivers
- Roads
- Land cover
- Structural features
- Onshore geology
- Onshore geology (Era)
- Offshore geology
- Free-Air Anomaly
- Magnetic Anomaly



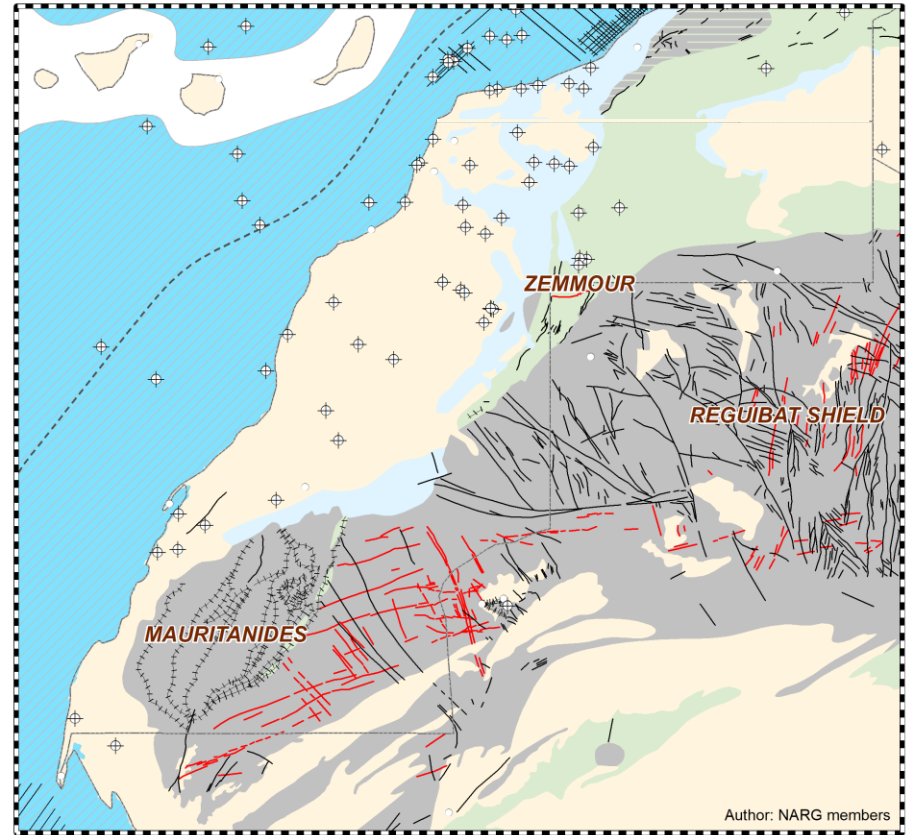
> 40 layers



Possible applications

Basin appraisals | e.g. *West African Craton*

Data-rich figures
& support basin
appraisal



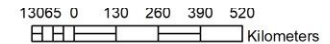
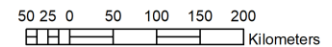
Author: NARG members

Offshore

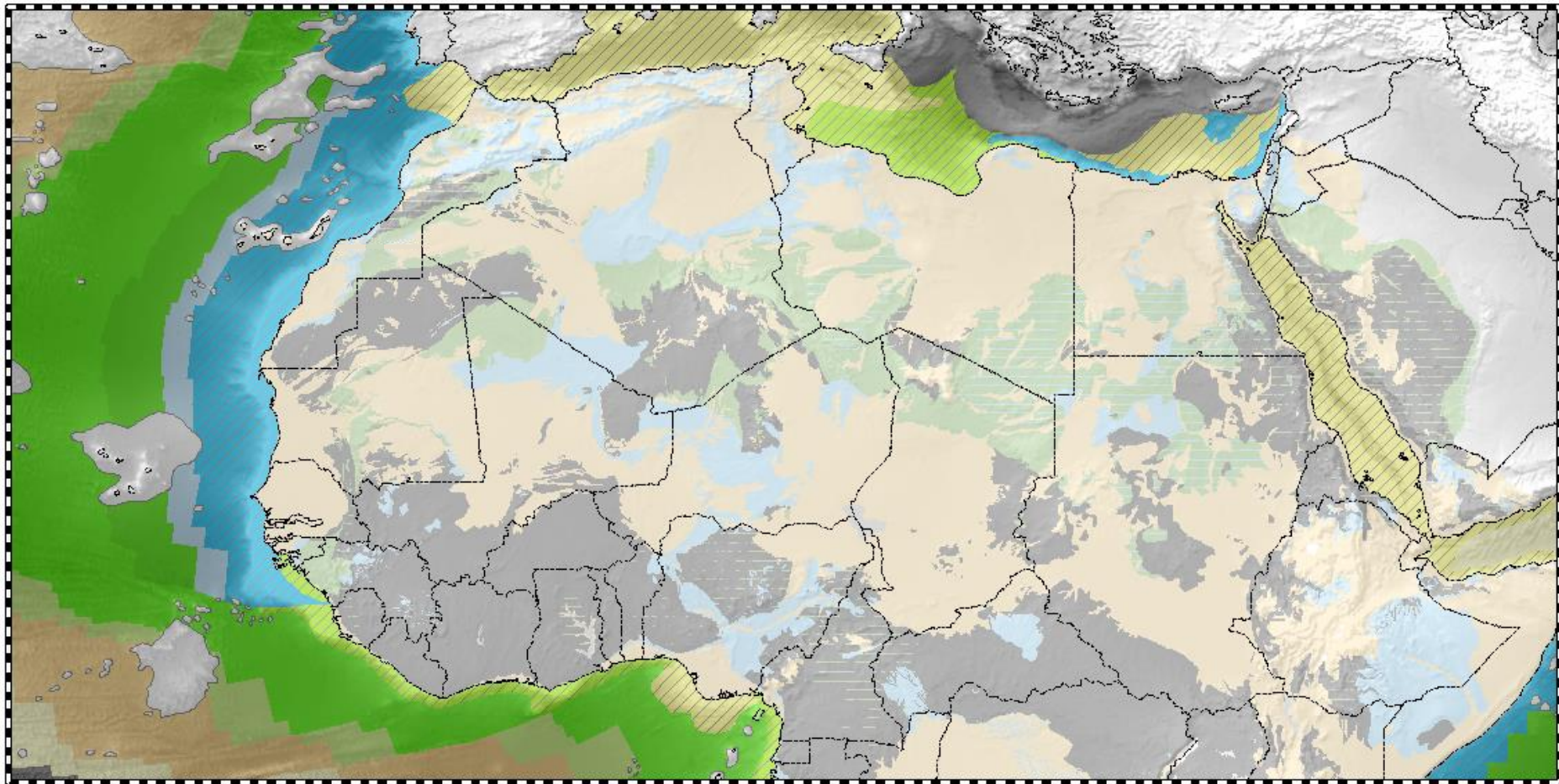
- Oceanic plateau,
- Maximum subsidence, und. Cenozoic
- Maximum subsidence, und. Cretaceous
- Maximum subsidence, und. Jurassic
- Oceanic crust, Neogene
- Oceanic crust, Palaeogene
- Oceanic crust, late Cretaceous
- Oceanic crust, mid Cretaceous
- Oceanic crust, early Cretaceous
- Oceanic crust, Late Jurassic

Onshore

- Cenozoic
- Mesozoic
- Palaeozoic to Mesozoic
- Palaeozoic
- Precambrian to Palaeozoic
- Precambrian



| Hands-on...



| Road map

Version 1.0
Planned for
Spring 2019



■ Towards version 1.0

- Inventorying all NARG data (Ph.D. Tim Ohiara)
- Digitizing the geological map of North Africa (M.Sc. Calum Knowles)
- Adding NARG data in critical layers (Dr. Ginny-Marie Bradley)
Wells, Outcrops, Cross-Sections, Paleoreconstructions, and all NARG layers
- Up-to-date concession blocks, well and seismic location in Morocco (ONHYM)
- QC data (all NARG academics)
- Multiplatform (me!)

■ Further updates

- Adding NARG data in remaining layers
- More datasets: diagenesis, palaeontology, subsidence, and interpreted seismic lines
- NARG-cited publications
- Updates after Ph.D. students submitted their Thesis or after paper publication
- NARG VR!



Thank you

| Feedback & Questions

| Research group sponsors

