



NARG STEERING MEETING

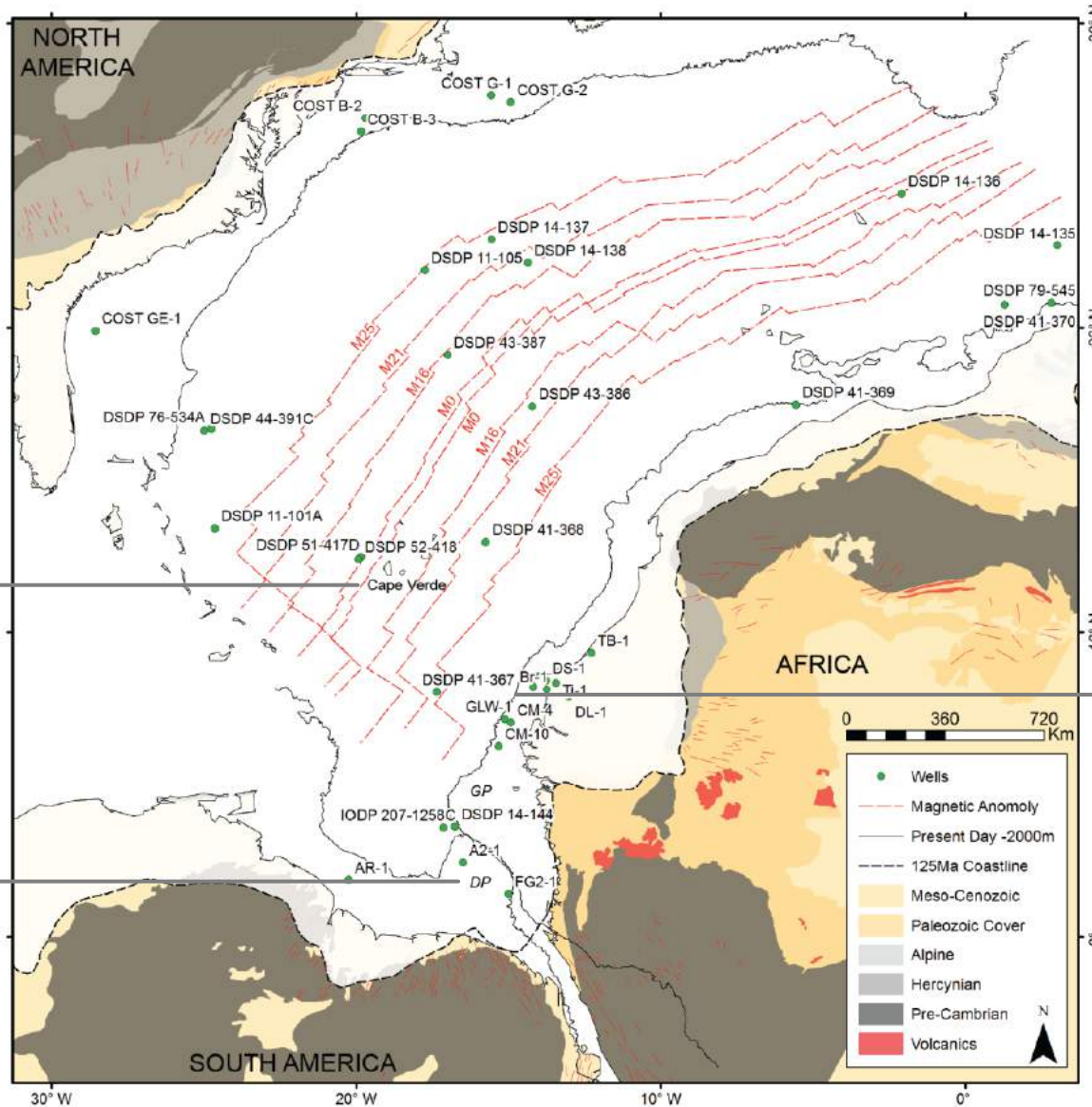
14th February 2019

*Max Casson, Prof. Jonathan Redfern, Jason Jeremiah, Dr. Luc Bulot
Dr. G r me Calv s, Ian Mounteney*





125Ma Tectonic Reconstruction | NARG Geodatabase & GPlates



1.

2.

3.

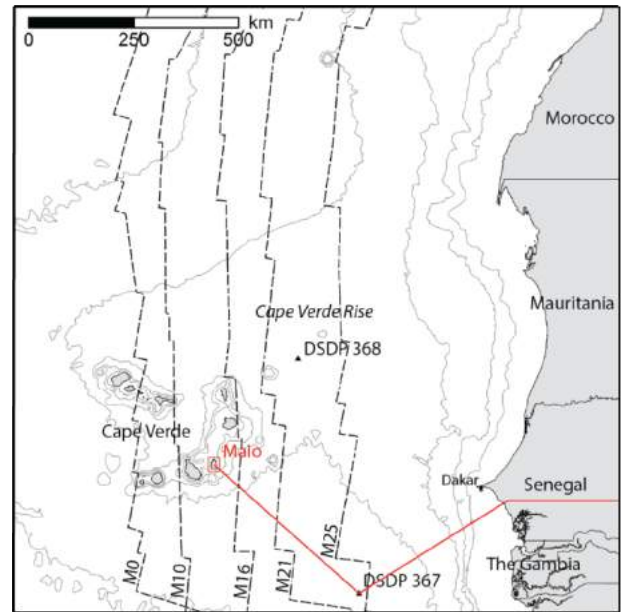
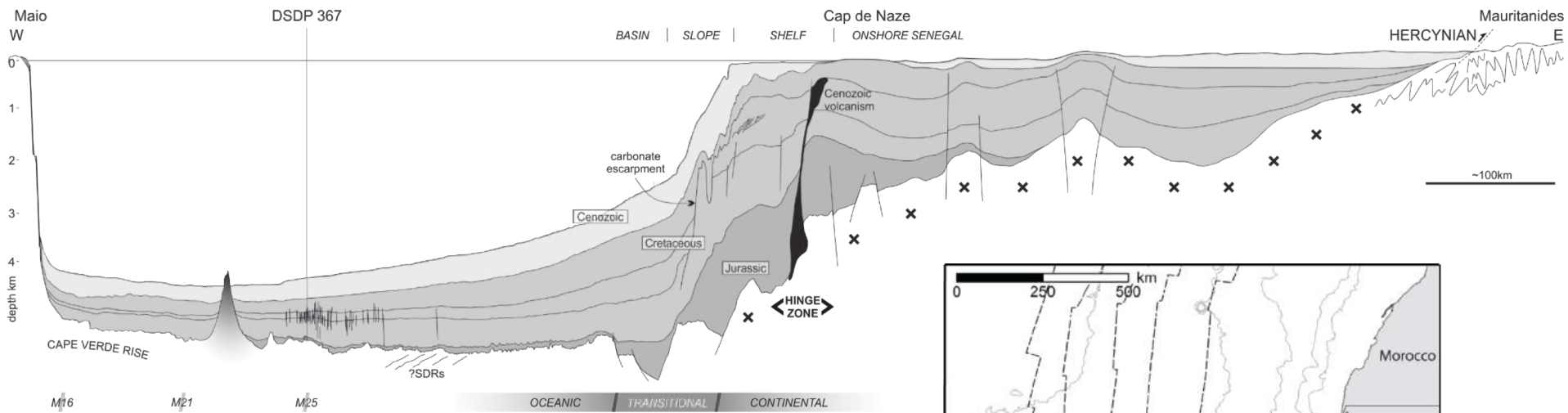


1. MAIO - CAPE VERDE

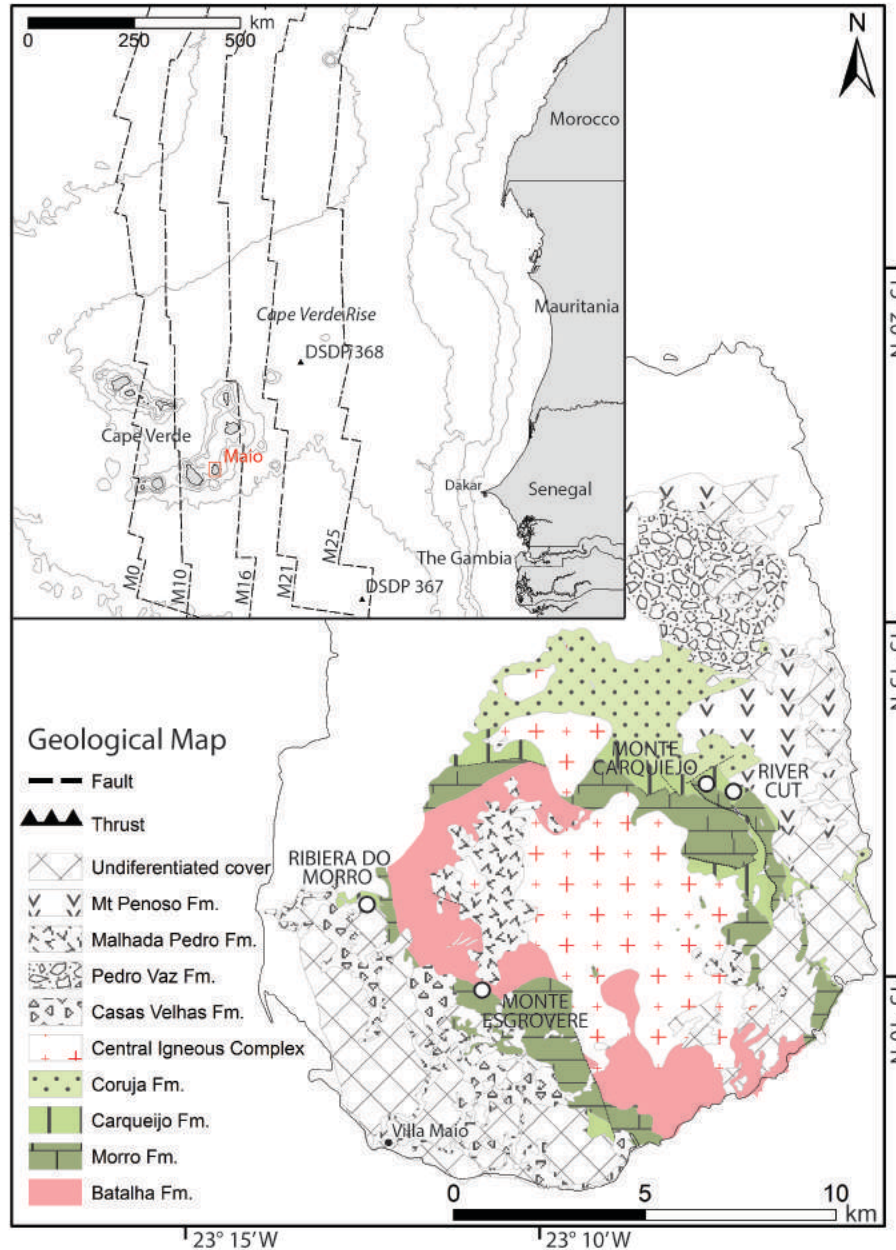
OBJECTIVES

- / revise distal domain stratigraphy
- / correlate sequences regionally

SUPER-REGIONAL CROSS SECTION

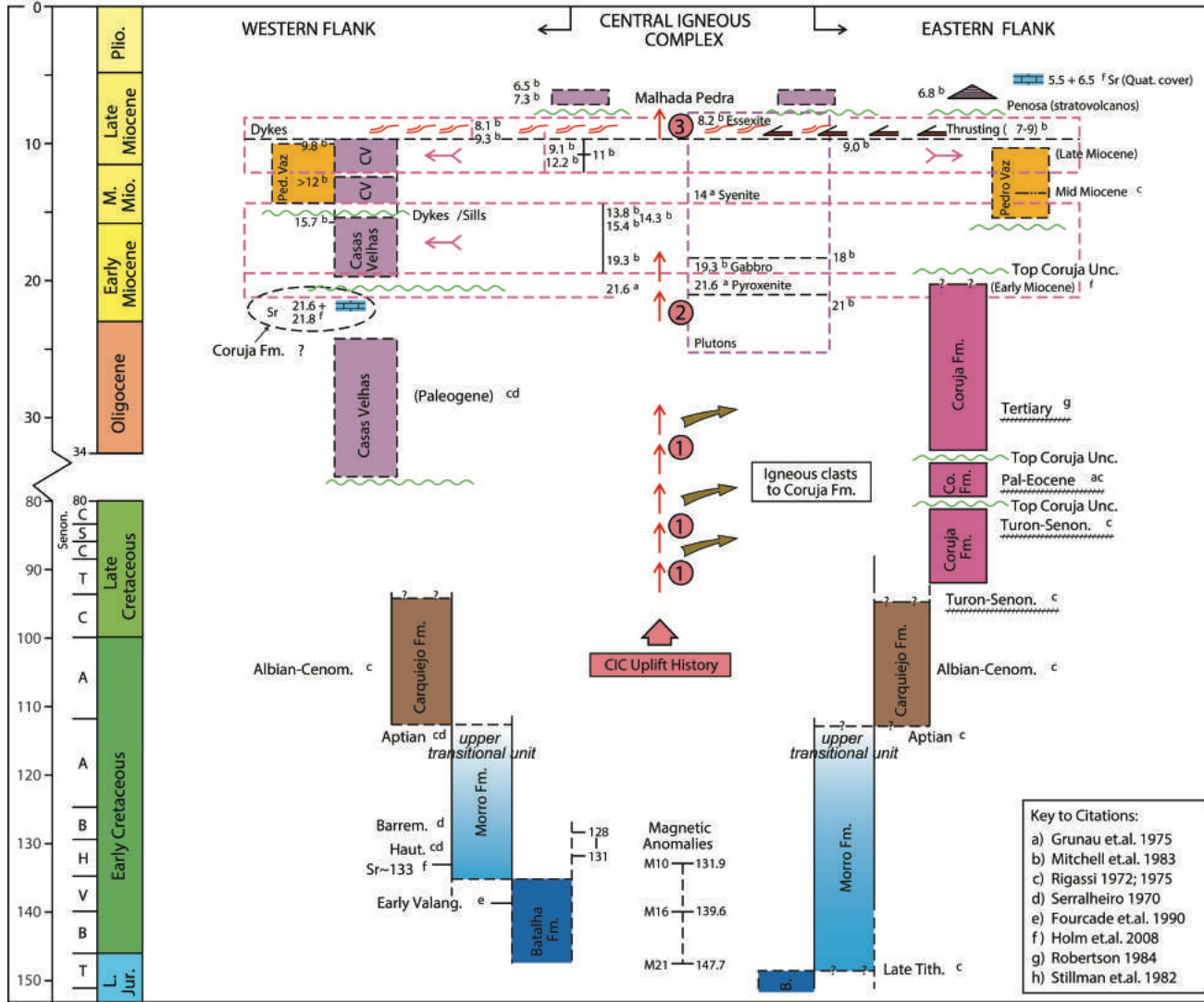


THE GEOLOGY OF MAIO

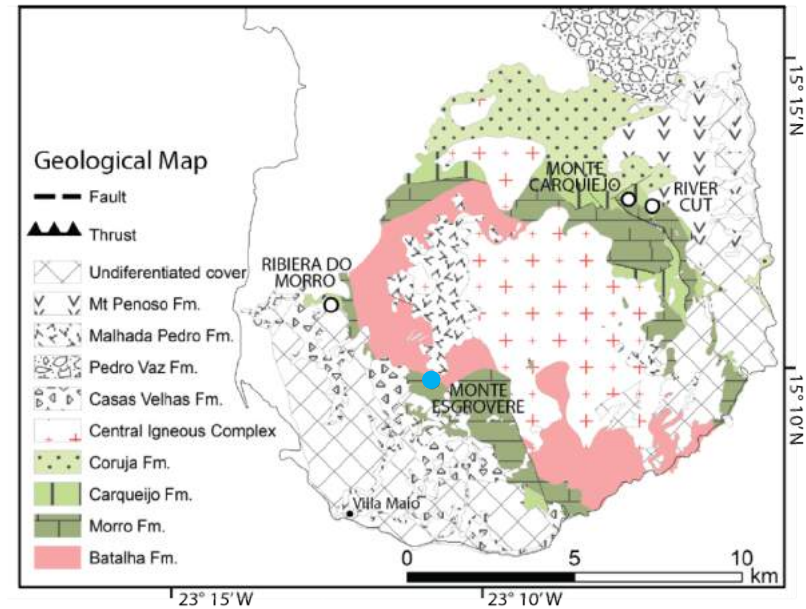
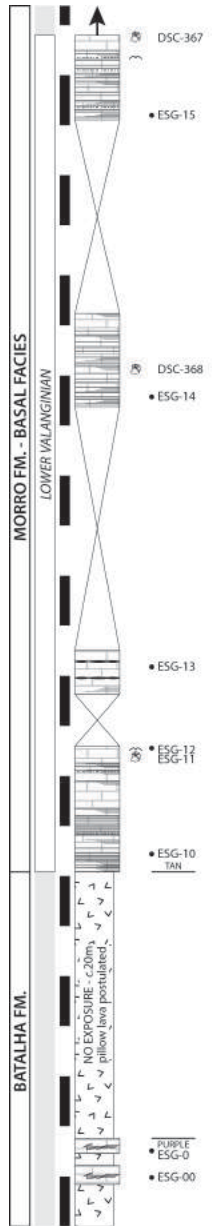




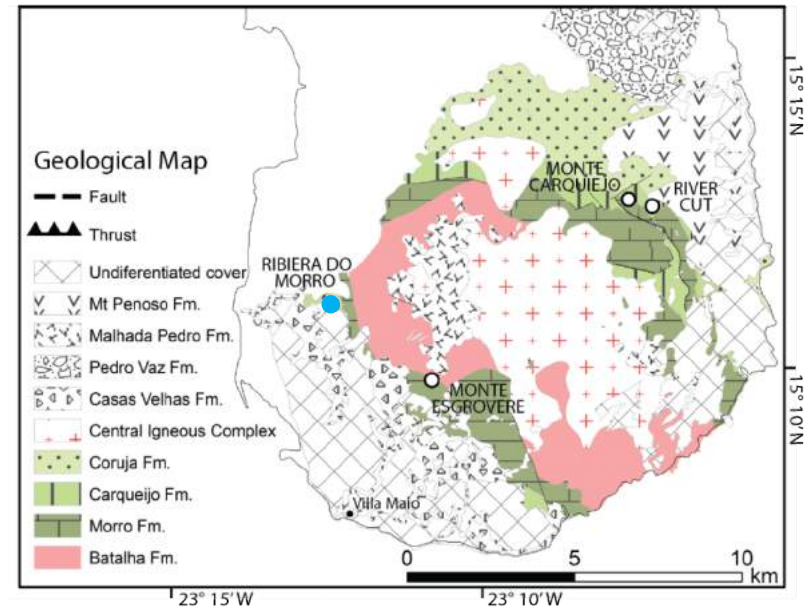
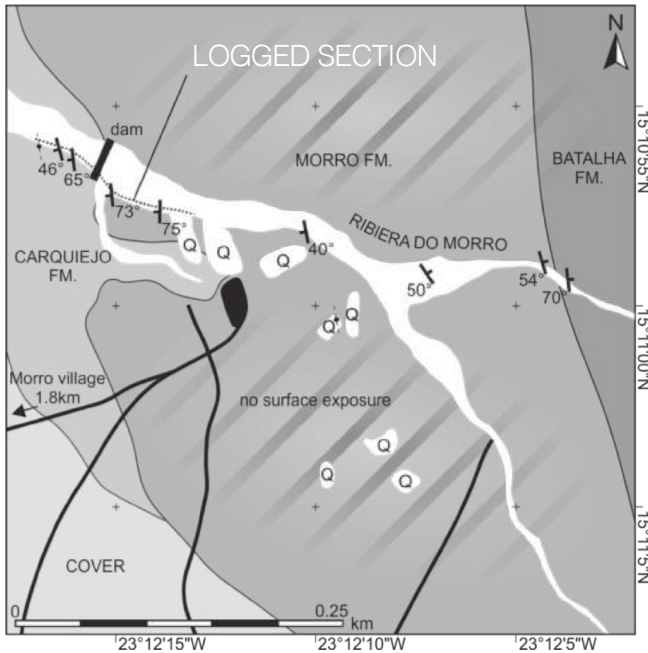
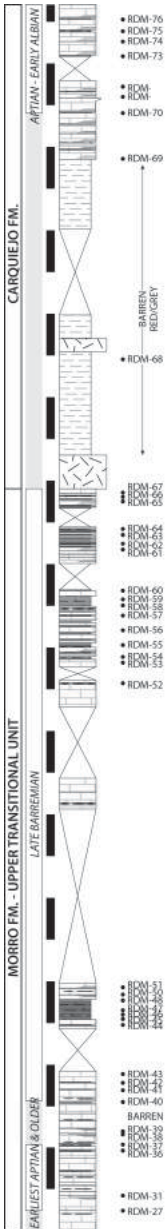
Chronostratigraphy | Lawrence (pers. comms. 2018)



NEW ANALYSIS

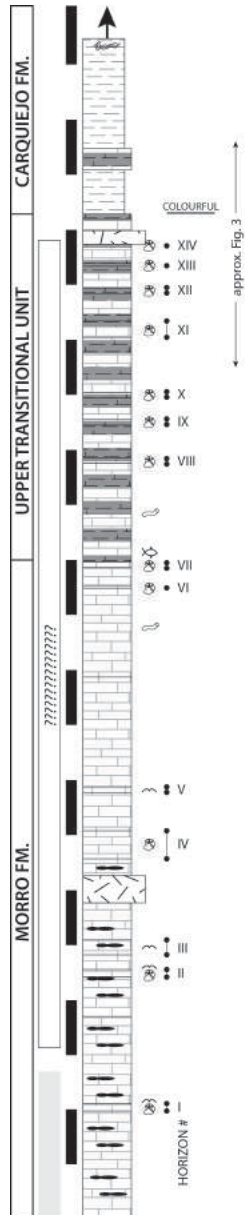


NEW ANALYSIS

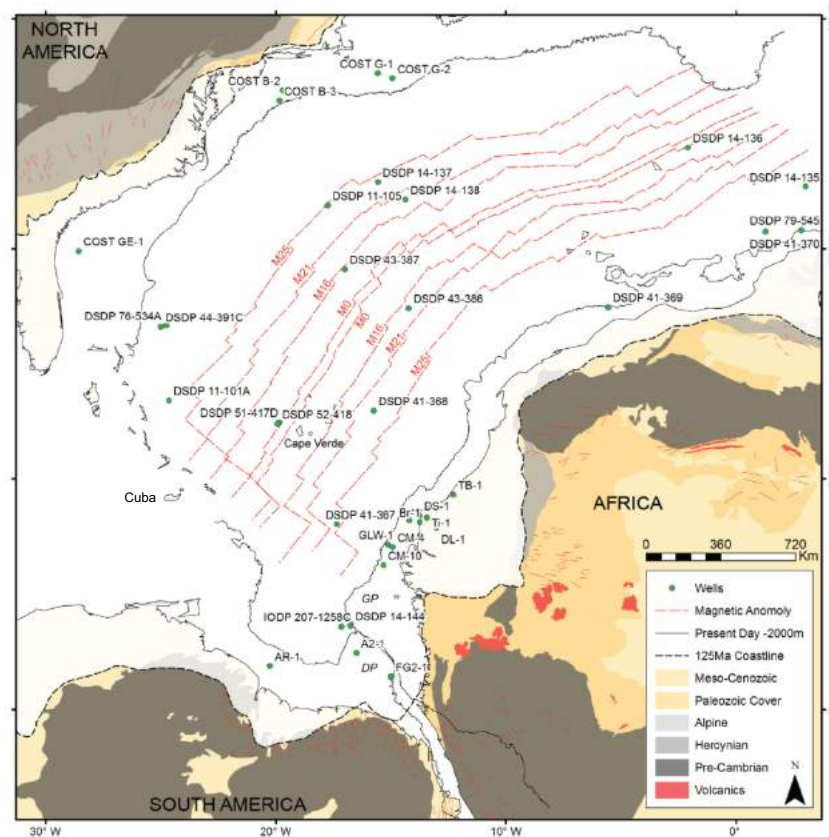




Tübingen collection | *Stahlecker, 1934*



125Ma Tectonic Reconstruction | NARG Geodatabase & GPlates



- / *Rosso Ammonitico facies* **absent** + new biostratigraphy = no Jurassic
- / Morro Fm. equivalent to *Maiolica facies* & Polier Fm. Cuba
- / Upper Transitional Unit – increase in terrigenous input & organic content
 - / base Carquejeo Fm. – regional hiatus



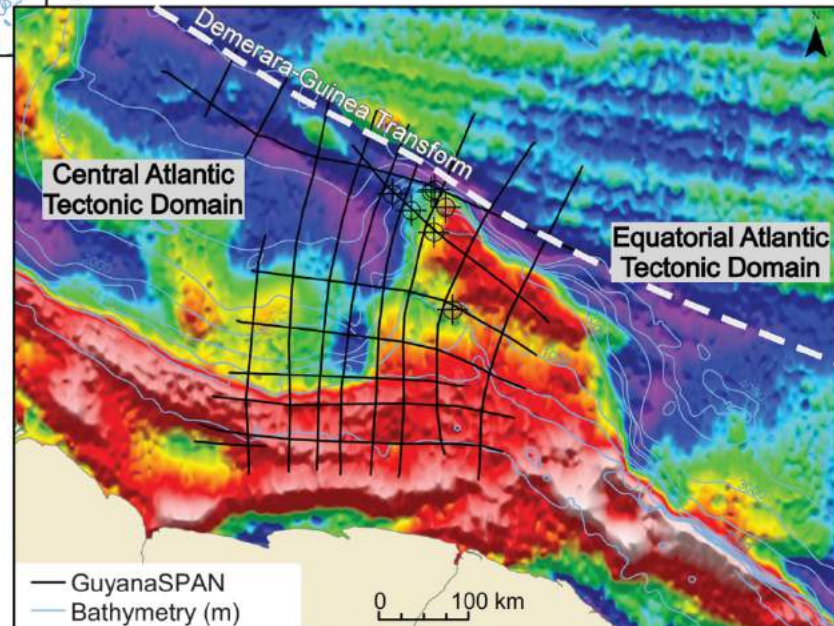
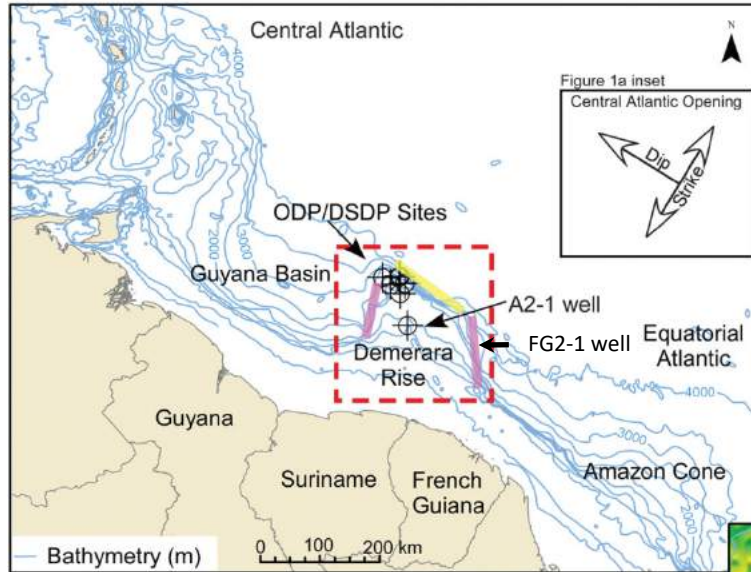
2. DEMERARA PLATEAU

OBJECTIVES

- / stratigraphic re-evaluation of exploration wells & IODP
- / regional seismic interpretation



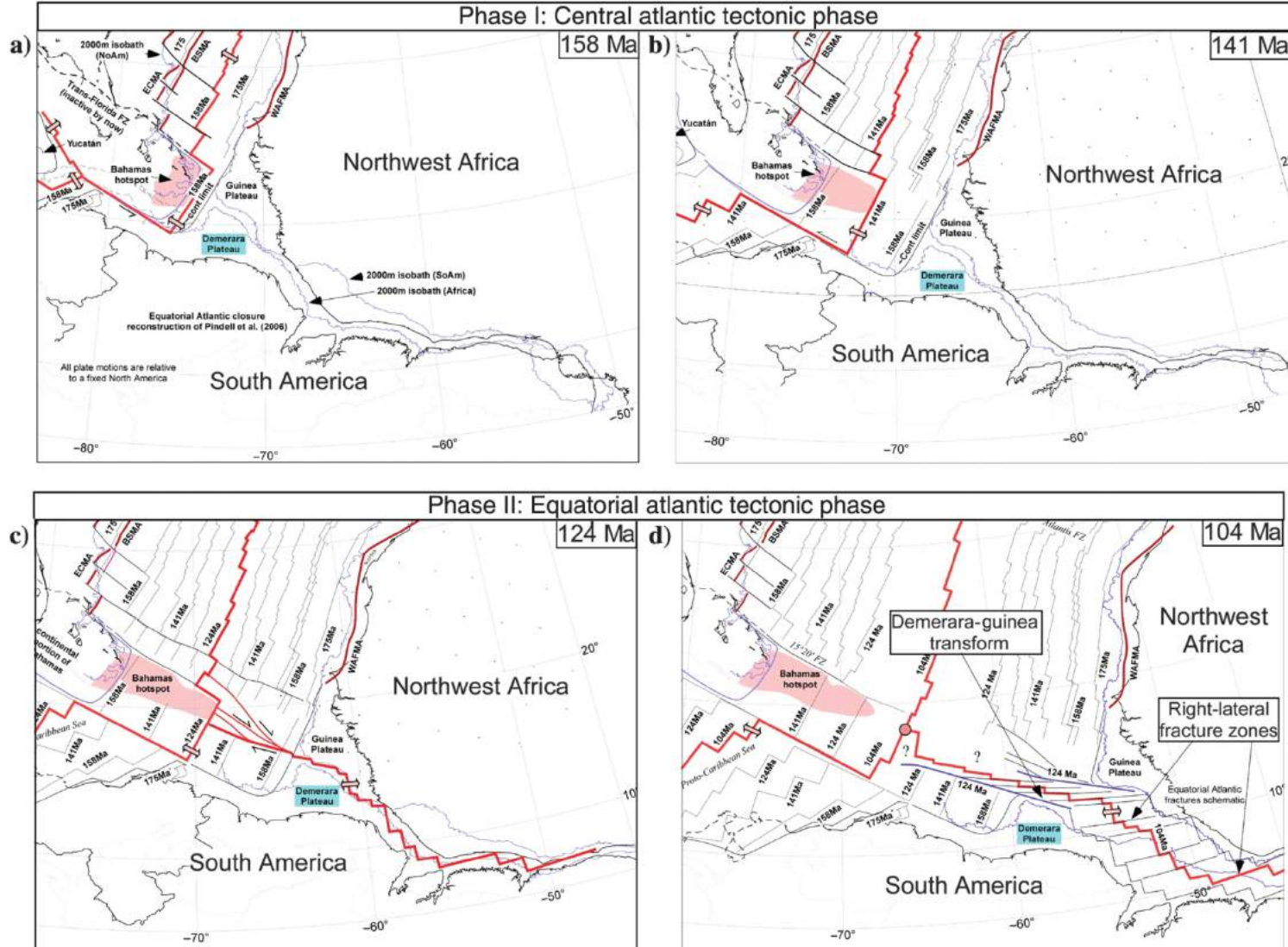
Regional location map | *Reuber et al., 2016*



THE DEMERARA PLATEAU

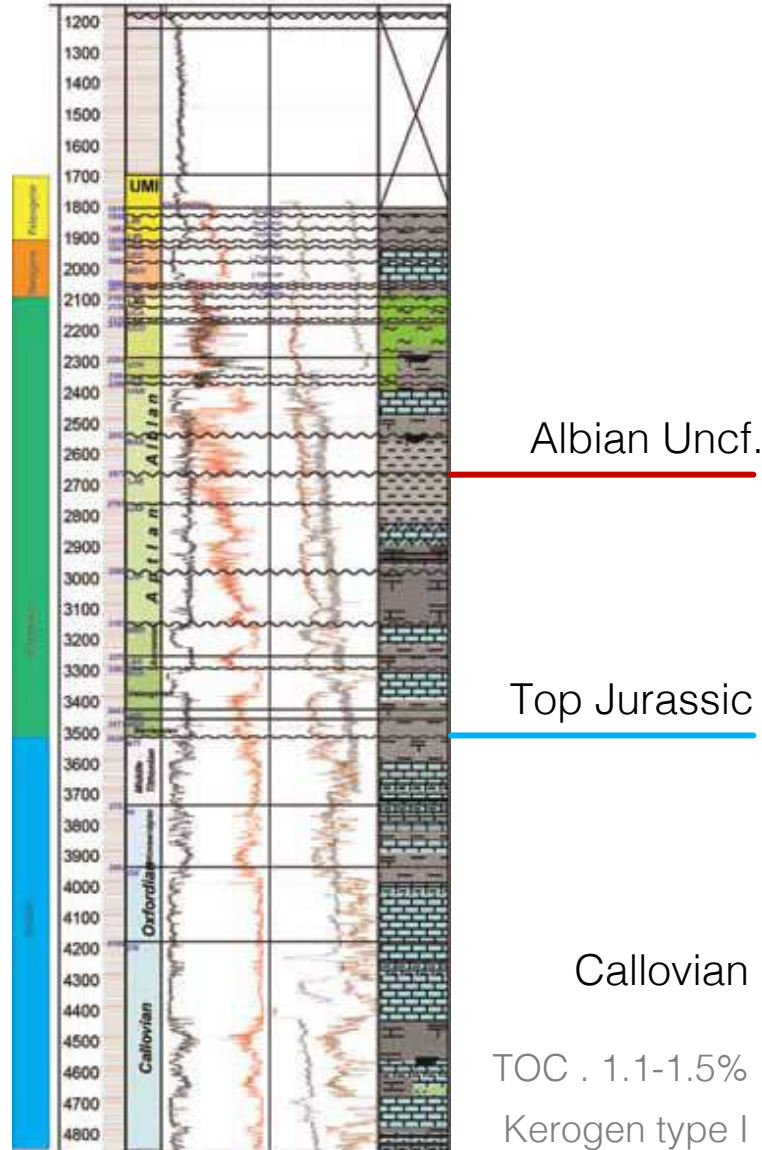


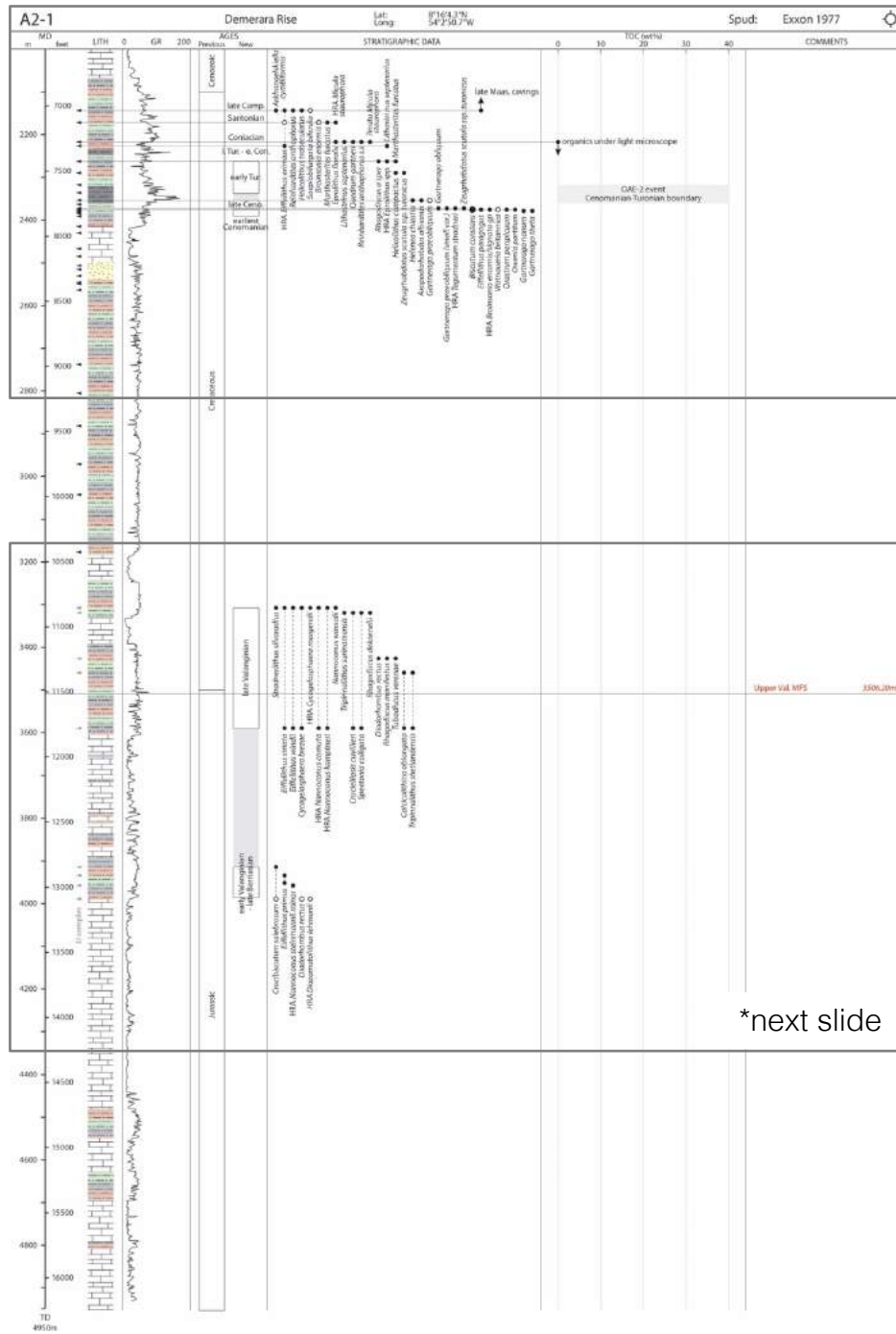
Tectonic evolution | *Reuber et al., 2016*





A2-1 Well Logs | *Staatsolie, 2013 & 2017*

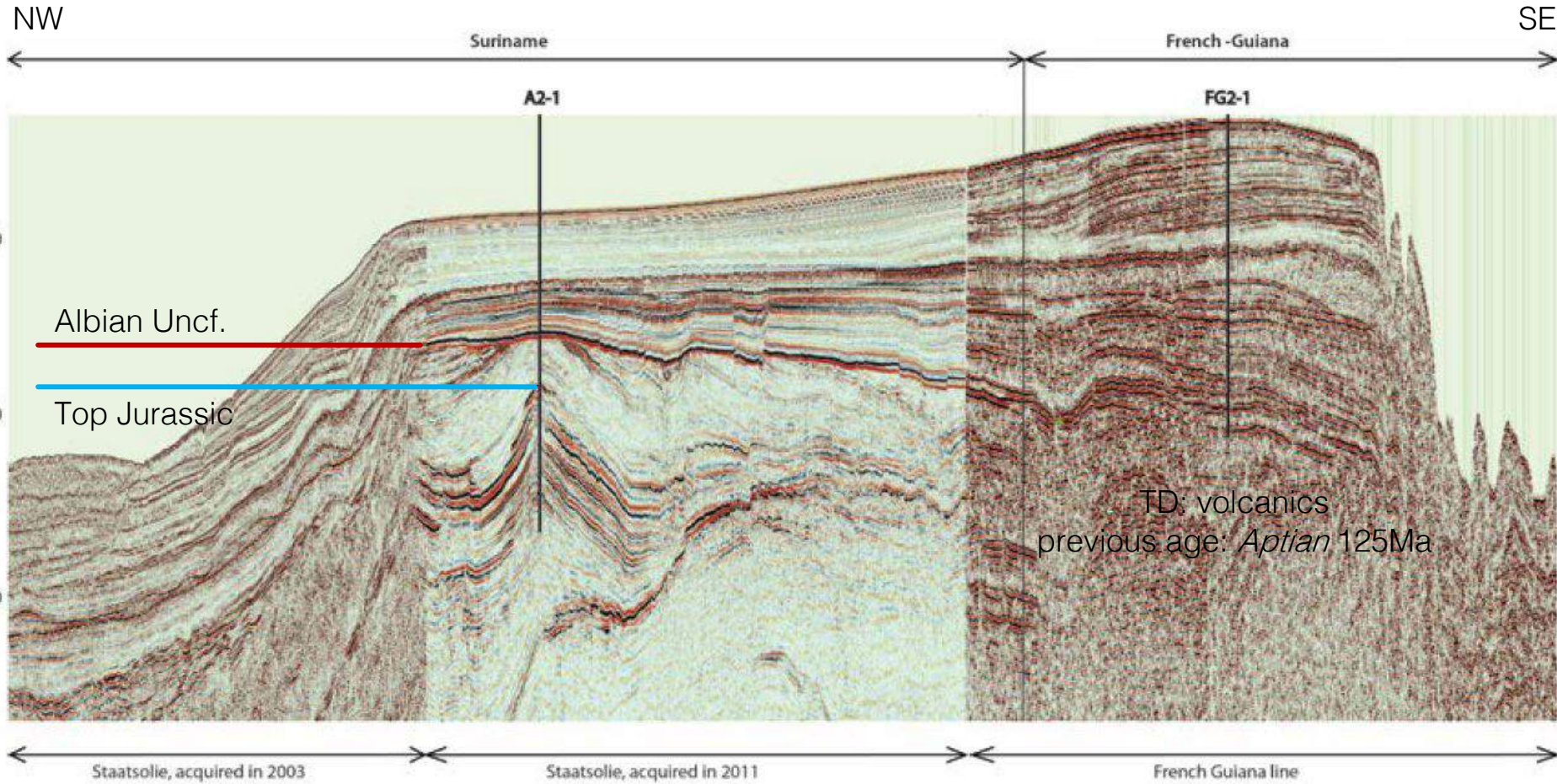




THE DEMERARA PLATEAU



Composite Seismic Line | *Staatsolie, 2013*





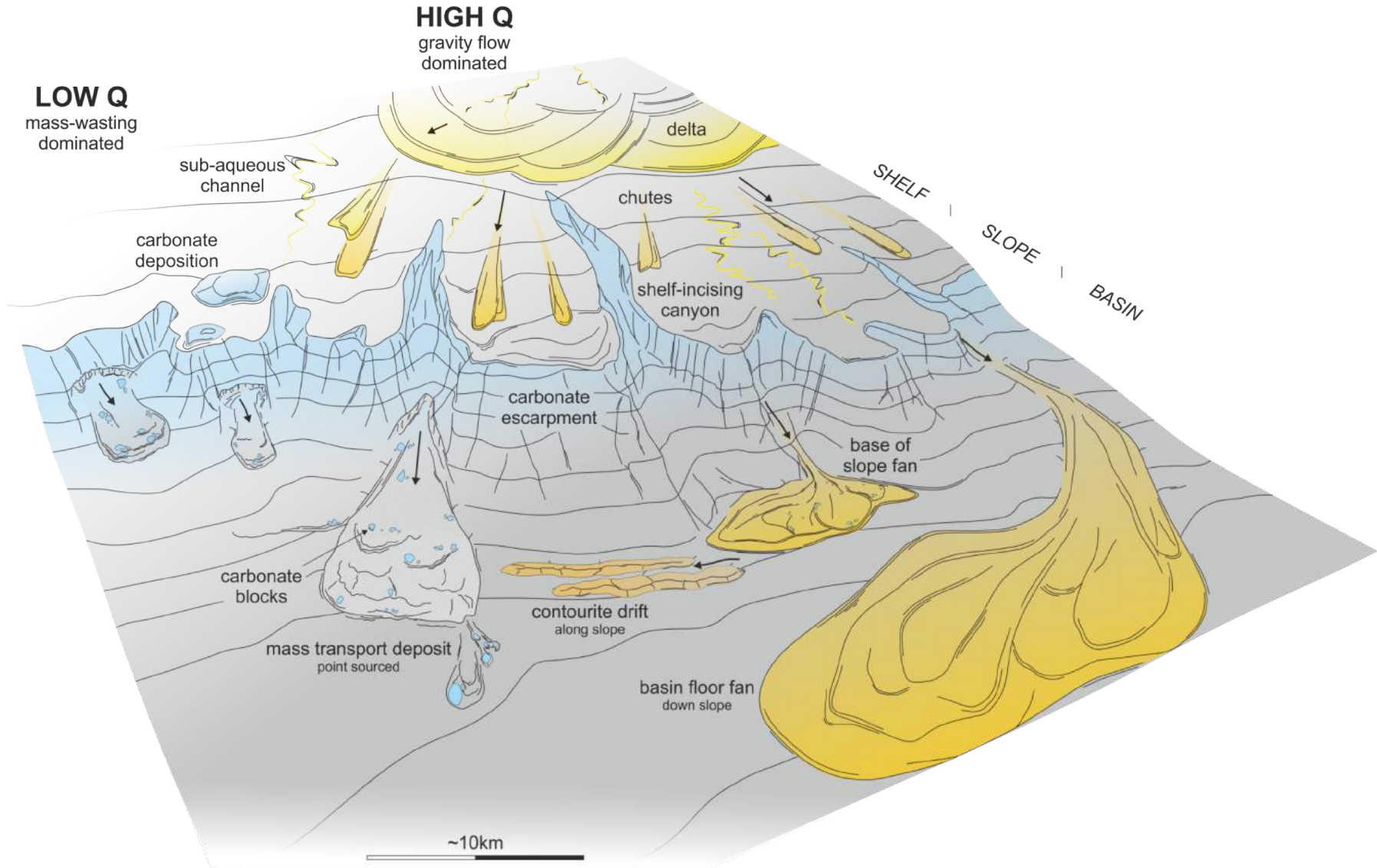
3. OFFSHORE THE GAMBIA

OBJECTIVES

- / apply new stratigraphic framework
- / detailed seismic interpretation
- / spatial-temporal controls on passive margin evolution

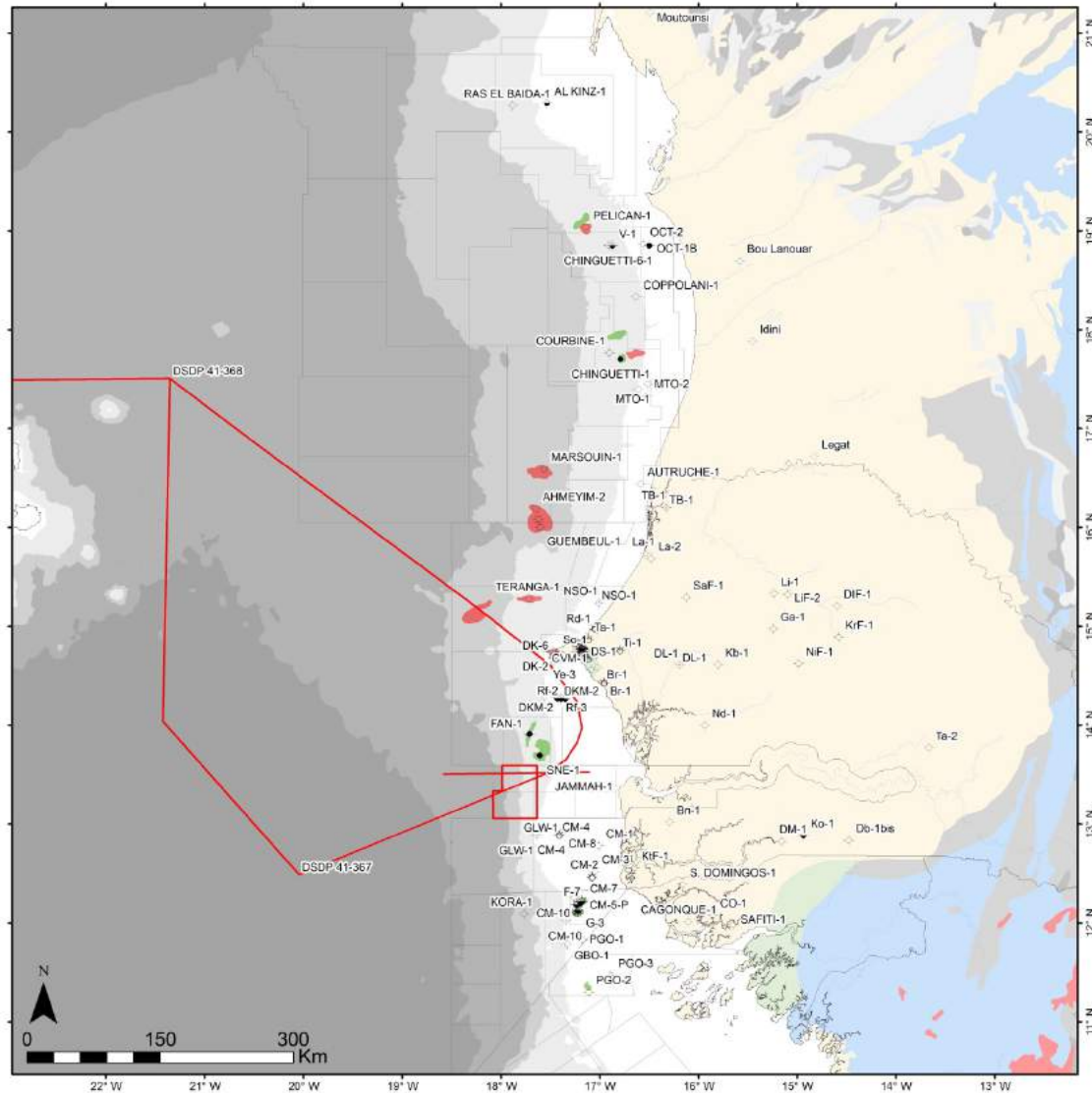
NW AFRICAN PASSIVE MARGIN

post-Aptian



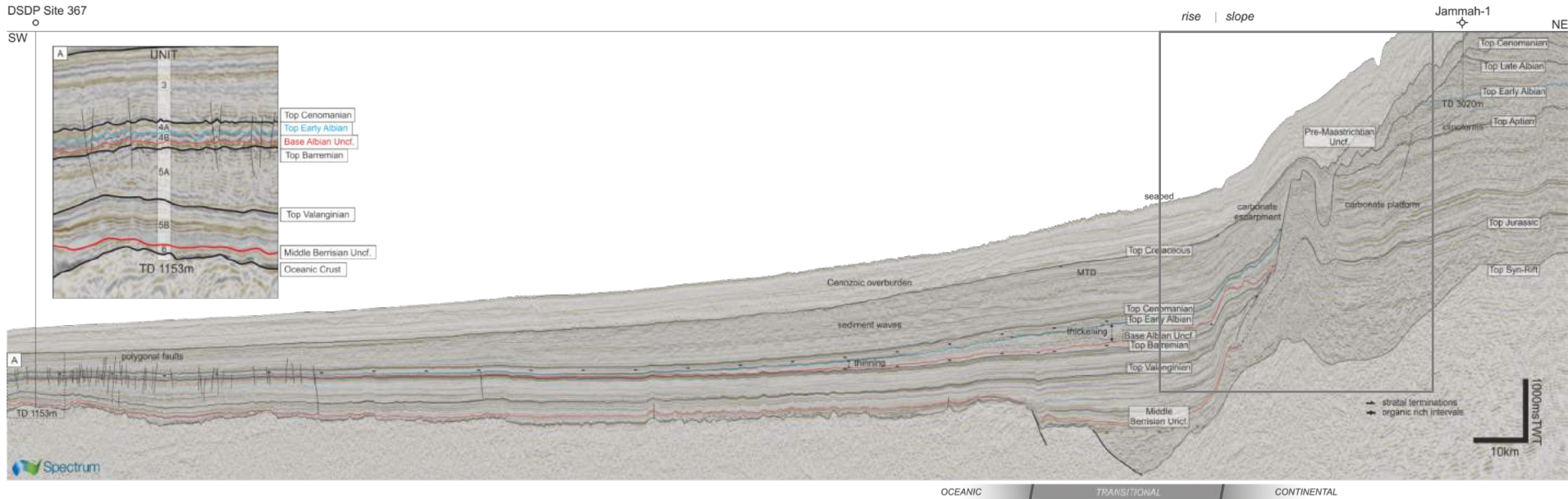


Seismic surveys | *NARG Geodatabase*



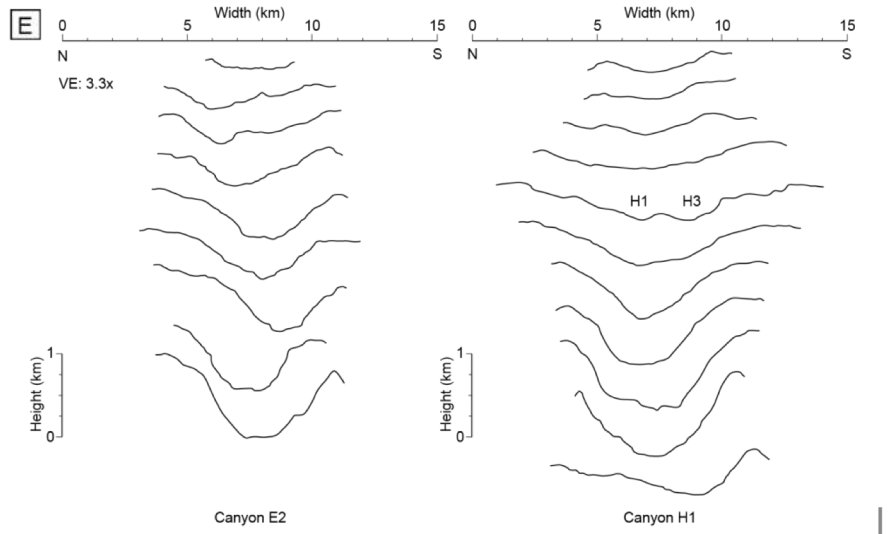
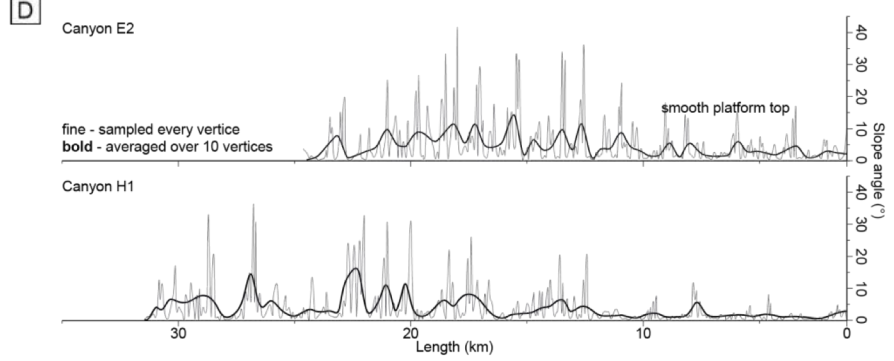
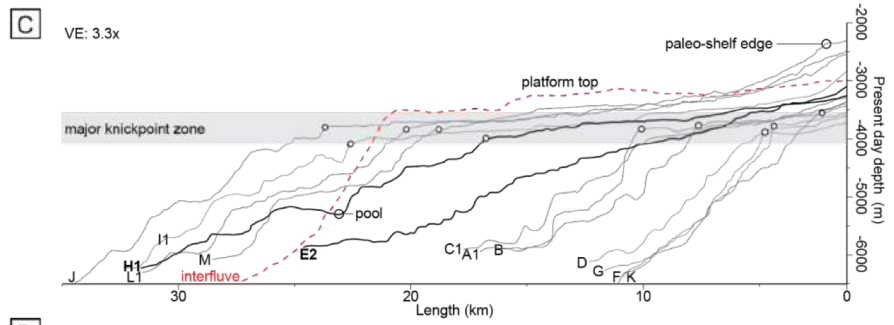
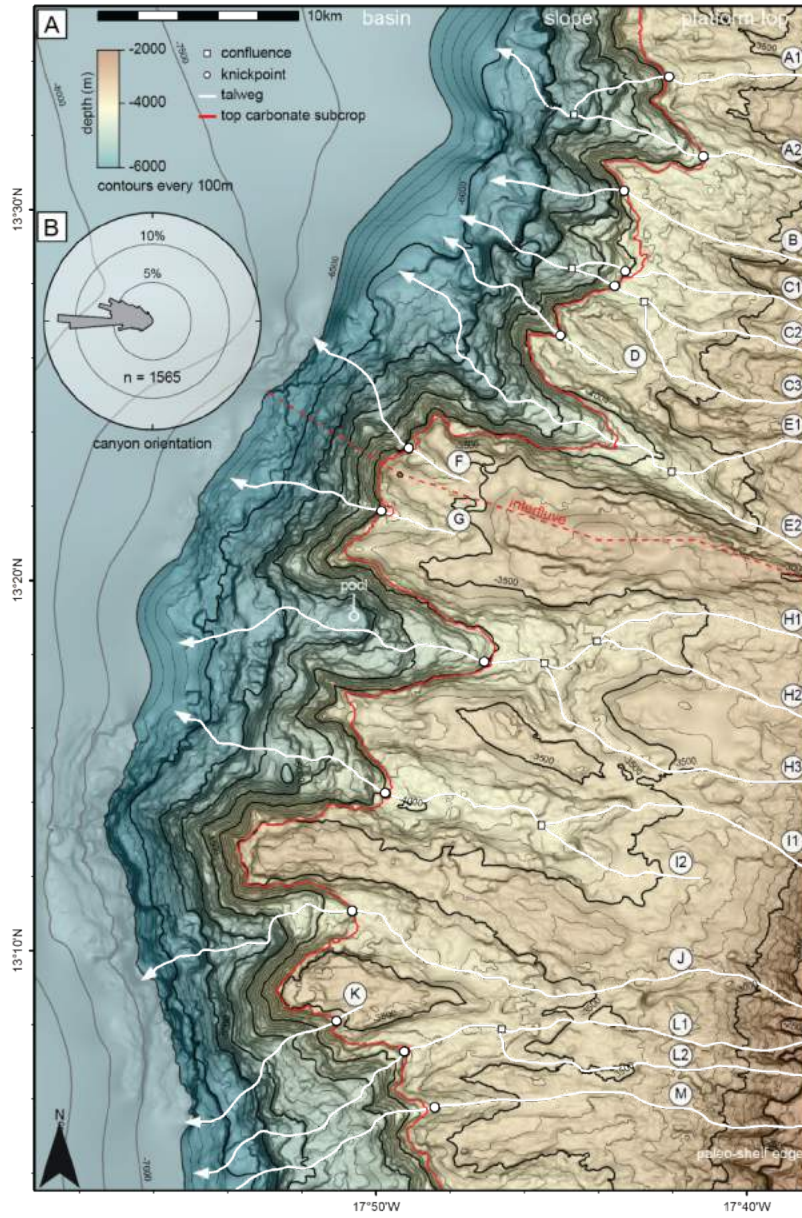


DSDP Tie Line | *Spectrum data*



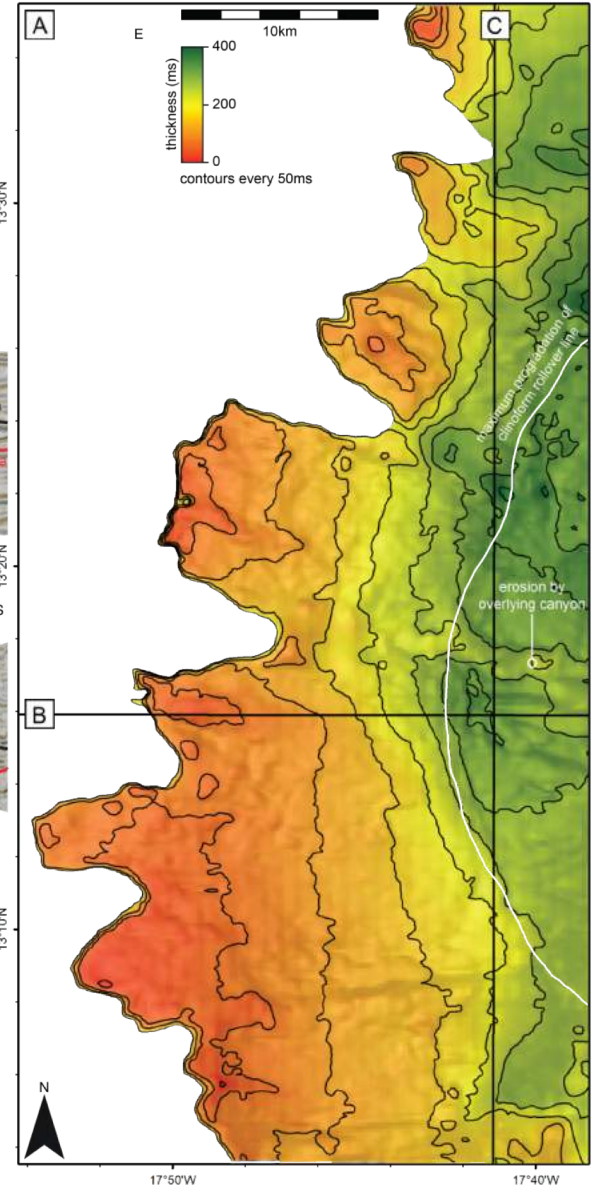
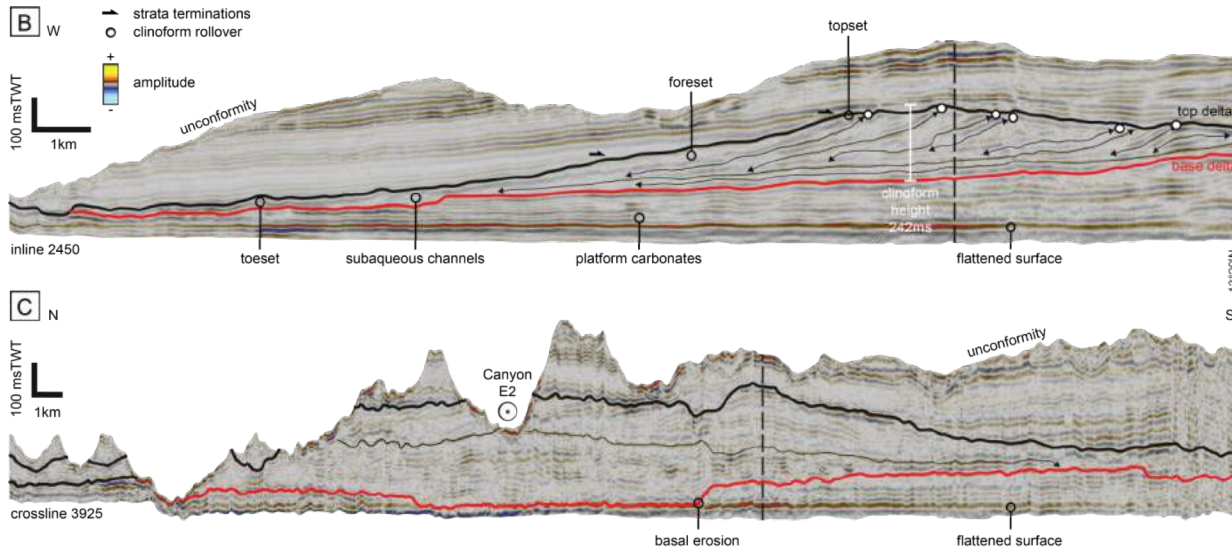
SEISMIC GEOMORPHOLOGY

pre-Maastrichtian uncf.



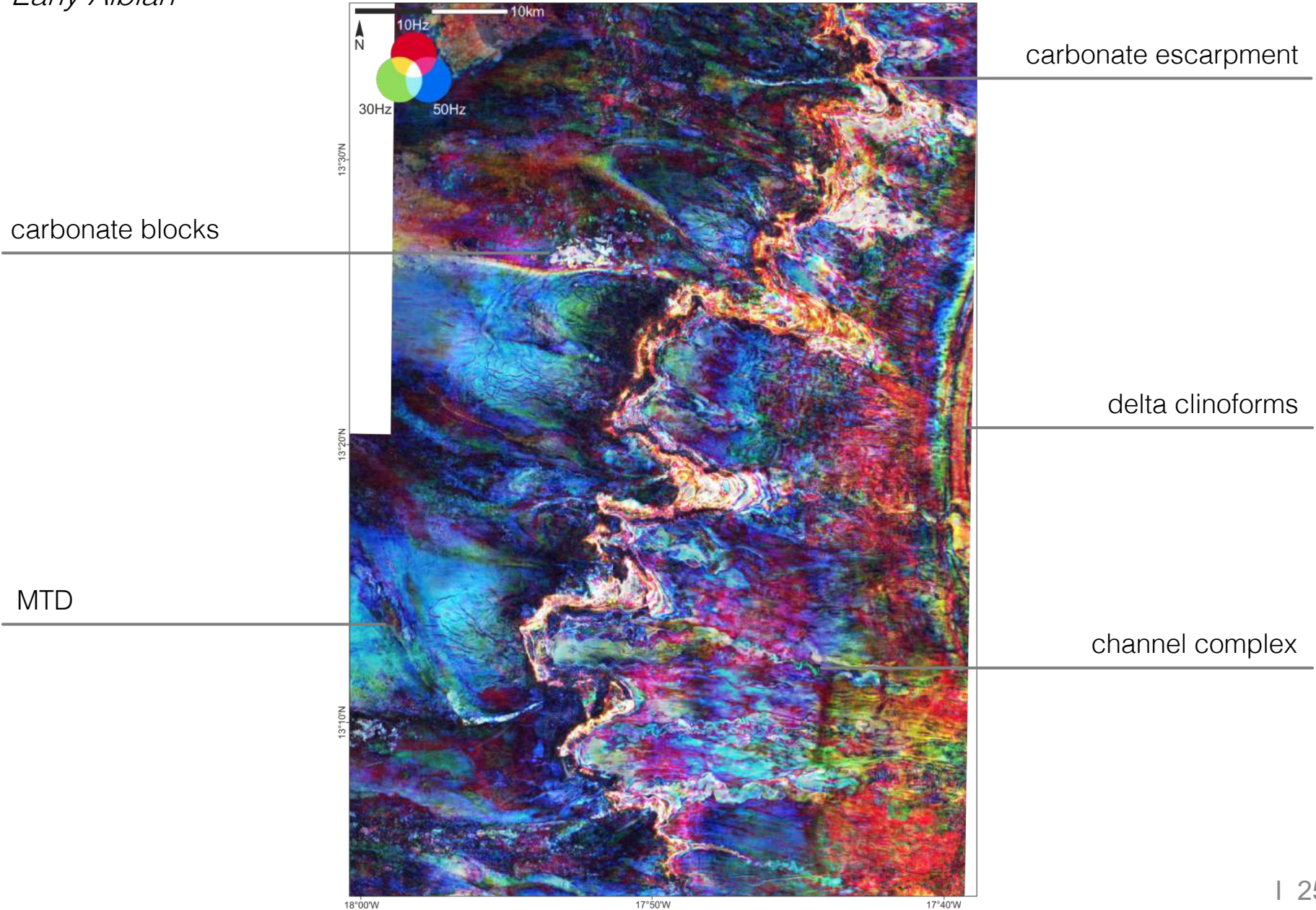
SEISMIC GEOMORPHOLOGY

Early Albian



SEISMIC GEOMORPHOLOGY

Early Albian





FORWARD PLANNING

- / submit paper: Maio, Cape Verde MARCH
- / Senegal workshop APRIL
- / finalise DSDP investigation *ongoing*
- / seismic interpretation *ongoing*

WITH THANKS

max.casson@manchester.ac.uk



